



# ClearChoice – Exact What’s Needed

## 1) Opposing Scan

 **Scan the opposing arch.**

Ensure full arch coverage including all visible teeth and tissue.



## 2) Bite Scan

 **Scan bilateral bite registration.**

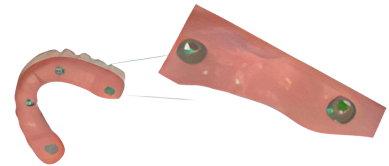
Capture from molar to midline on each side for best accuracy.



## 3) 360 Temp Scan

 **Capture complete 360° scan of temporary.**

Be sure to capture the cylinder shoulder, as it will be used for aligning with the MUA in tissue scan.



## 4) Scanbody/Exact Scan Link



**Capture the full horizontal surface of each scan body.**

- Capture the full horizontal surface of each scan body.
- Make sure at least 11 of the 15 vertical scan body head surfaces are recorded per scan body.
- Ensure there are at least 2-3 connections between scan bodies and MUAs across the full arch.
- Include enough buccal and lingual anatomy, extending 3-5 mm past the finish lines where a prosthetic flange may reach.
- For upper scans, include the palate.
- Capture at least 15 mm of soft tissue behind the most distal implants on both sides.
  - *If implants are very far back, 5 mm (or less for Pterygoid) is enough for the 2nd molar, 3rd molar, or Pterygoid region.*





## 5) MUA/Tissue Scan

### Scan tissue with MUA in place.



- Include sufficient buccal and lingual extensions, matching the scan body record.
- Remove all ghost or duplicate scan body remnants.
- 360° scan:
  - Make sure all MUA shoulders are scanned and at least 60% visible for 75% of the scan bodies.
  - Example: For 4 implants, at least 3 MUA shoulders must be 60% visible.



## 6) Fully Filled Out Rx

### Complete prescription with emphasis on specific improvement comments.



#### Details:

- VDO change: open, close, how many mm, and to which arch to apply the VDO change
- Occlusion: list any changes needed to the current bite relationship
- Incisal edge position: move facially, lingually, or vertically, and how many mm
- Midline: move left or right, and how many mm

**CRITICAL:** Write "Exact Workflow- digital only, models not needed" in the rx section of their Trios order.

## 7) Photos Wearing PMMA

Photographs showcasing a full face and a complete smile with PMMA in position.



Take frontal & lateral (right & left) high smile photos.



## 8) Shade Selection



### Tooth shade and gingiva shade selection

- **Note:** Include gingiva shade guide manufacturer information

### IMPORTANT: VERIFICATION JIG REQUIREMENT

The first 5 cases require a verification jig to be mailed to us to confirm accurate scanning. Once the office completes 5 cases successfully with verification jigs, we can proceed fully digital.

**Submission:** Send cases through 3Shape with RX attached. Backup: [ClearChoice@skdla.com](mailto:ClearChoice@skdla.com). Use Trios QR code for uploads.