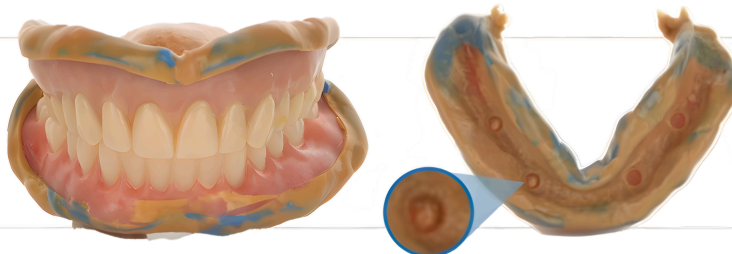


Aspen ONiX What's Needed



1. Take ASAP Impression

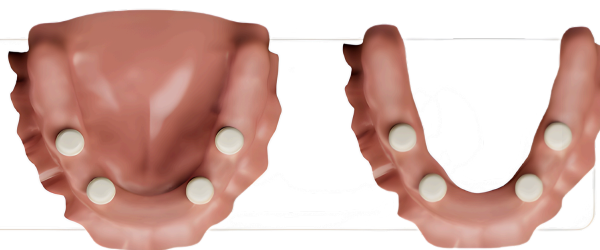
Capture a light body impression using recommended material (virtual). Make sure abutments are visible in the impression.



2. Locator Scan Body with Tissue

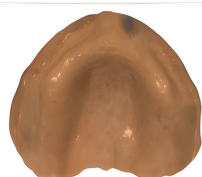
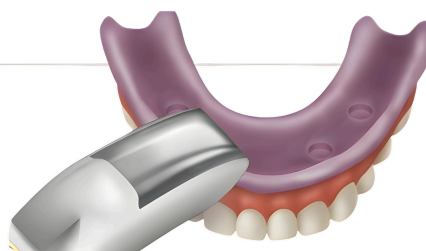
Zest Locator Scan Body Scan

Provide a locator scan body scan with soft tissue captured to ensure proper seating and design accuracy.



3. 360 Scan with Wash

Important: The denture must be scanned out of the patient's mouth to capture all surfaces completely (buccal, lingual, palatal).



Examples: Full denture scanned out of mouth – 360° views

Opposing Model

If case is a single arch complete an opposing arch status scan to confirm occlusion and bite relationship.



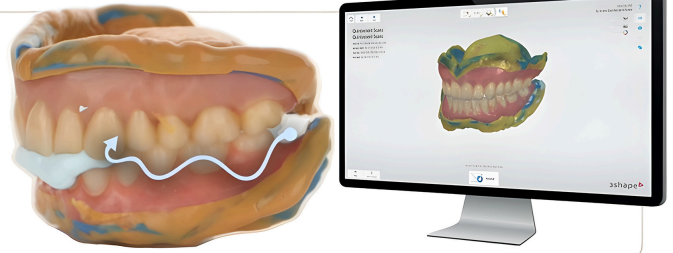
This guideline reflects recommendations developed by Aspen Dental, with collaborative input from Spectrum Killian Dental Lab (SKDLA). It is intended solely as a reference for informational purposes and does not establish a standard of care. It is not a substitute for exercising professional clinical judgment when advising, diagnosing, recommending, or providing treatment. Always practice in compliance with your state licensing body's rules, regulations, and guidelines. Confidential and Proprietary The use of these materials is strictly limited to training and education by and for authorized employees and representatives of Aspen Dental, ClearChoice branded practices, and Spectrum Killian Dental Lab (SKDLA).

4. Bite Scan

Capture a bite using blue bite and make sure to remove buccal blue bite.

Capture a buccal bite scan (right and left bite).

Verify alignment after processing before submitting.



5. Photo Sequence

Using the Aspen Photos app, take Photos of patient with denture or wax rim in the mouth

- Use Aspen Photo App
- Proper Photos Result in optimal outcomes
- Photos are to be taken with the ASAP or wax rims in the mouth after impression



Frontal High Smile



Frontal Relaxed



Profile Relaxed



Profile High Smile

5b. Additional Photos (Edentulous)



Frontal High Smile



Profile High Smile

6. Complete Rx with Notes

Submit a fully completed Rx with emphasis on areas for improvement:

- VDO changes (open/close, specify mm and arch)
- Occlusion adjustments
- Incisal edge changes (facial, lingual, vertical, specify mm)
- Midline changes (left/right, specify mm)
- **Note:** Include both tooth shade and gingiva shade (with shade guide manufacturer).

! TRY-IN REQUIRED